

Technical data



Available screw types	Acme or Ball
Max. static load at fully retracted [N]	
Acme screw models	11 350
Ball screw models	18 000
Min. / max. standard stroke [mm]	100 / 600
Max. input speed [rpm]	3000
Max. input torque [Nm]	1,8
Max. end play [mm]	1
Restraining torque [Nm]	–

Features

- Rugged and robust
- Motor fitted by customer
- Aluminium cover tube with T-slot
- Position sensors can be fitted to the T-slots
- Trunnion mounting possible
- Anti rotation mechanism
- Overload clutch (set to 1,2 – 1,5 x max. permissible load)
- Acme or ball screw drive
- Holding brake prevents back driving on ball screw models
- Acme screw models are self-locking
- Safety nut on all ball screw models
- Maintenance free

Options

- Hand wind
- Custom RAL color

Performance table

Model	Max. dynamic load [N]	Speed @ max. load [mm/s]*
FA14-05A65	1100	32
FA14-05B65	2250	37
FA14-10A65	2250	18
FA14-0B65	4500	19
FA14-20A65	2250	12
FA14-20B65	4500	12
FA14-21B65	6800	11

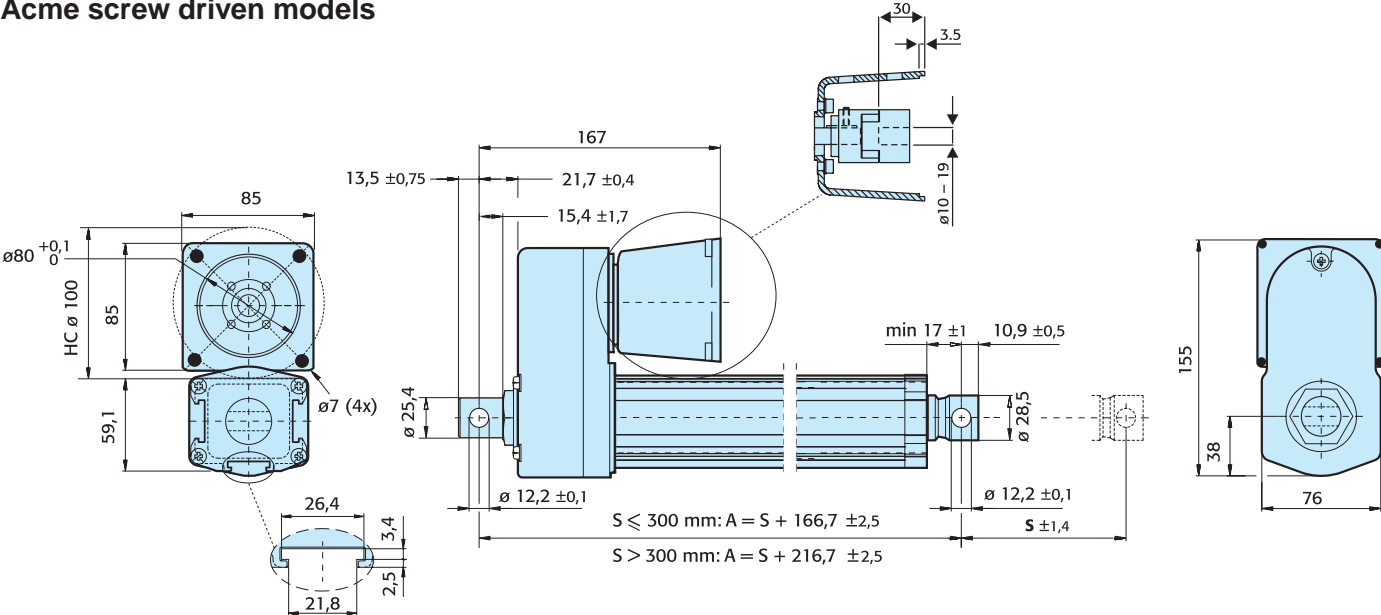
*Recommended value

Standard strokes

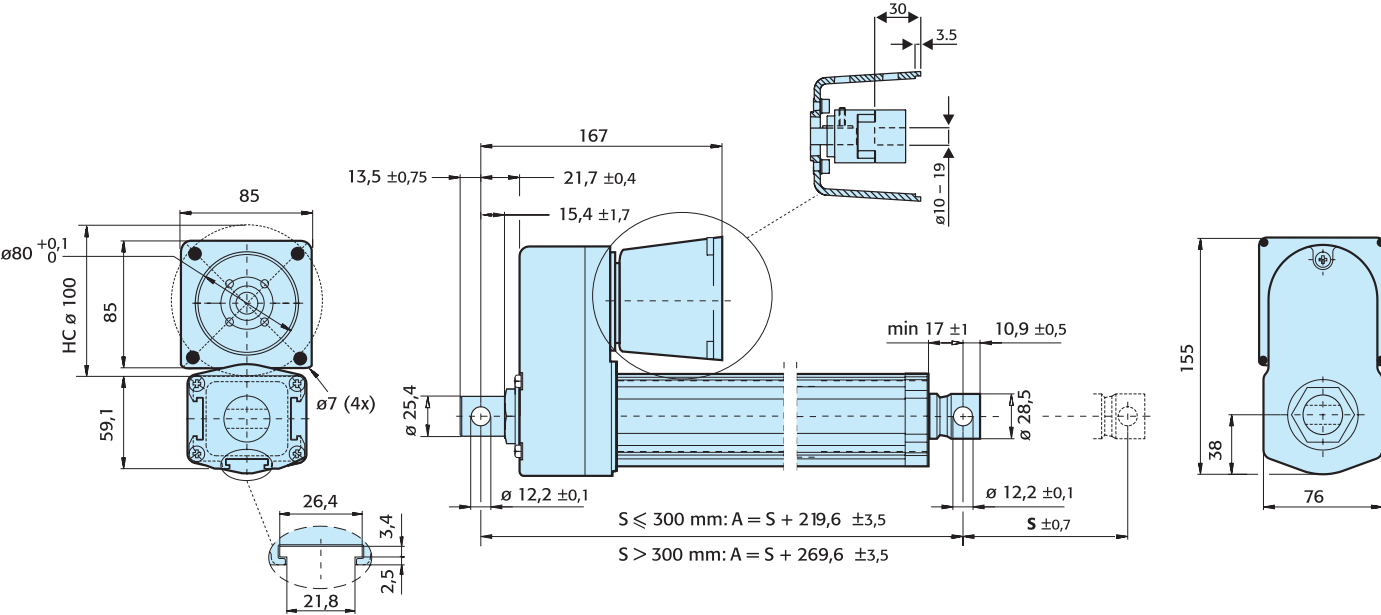
Ordering stroke [cm]	Actual stroke S [mm]
5	50
10	100
15	150
20	200
25	250
30	300
35	350
40	400
45	450
50	500
55	550
60	600

Dimensions

Acme screw driven models



Ball screw driven models



Electrak FA14

Designation example	FA14	-	10A65	M	40	M0	N	HW
Actuator type FA14 (actuator without motor)	FA14							
Hyphen		-						
Gear ratio / screw type / screw diameter / screw lead 5:1 / acme screw / 15,88 mm / 5,08 mm 10:1 / acme screw / 15,88 mm / 5,08 mm 20:1 / acme screw / 15,88 mm / 5,08 mm 5:1 / ball screw / 15,88 mm / 5,08 mm 10:1 / ball screw / 15,88 mm / 5,08 mm 20:1 / ball screw / 15,88 mm / 5,08 mm 20:1 / ball screw / 15,88 mm / 5,08 mm with hardened gear			05A65 10A65 20A65 05B65 10B65 20B65 21B65					
Engineering unit Millimeter				M				
Stroke 5 cm 10 cm 15 cm 20 cm 25 cm 30 cm 35 cm 40 cm 45 cm 50 cm 55 cm 60 cm					05 10 15 20 25 30 35 40 45 50 55 60			
Adaptor hole position (for definition see page 26) Rear adaptor 0° (standard position) Rear adaptor 30° Rear adaptor 60° Rear adaptor 90° Rear adaptor 120° Rear adaptor 150° Rear and front adaptor 90°						M0 M1 M2 M3 M4 M5 MF		
Anti coast brake No anti coast brake							N	
Options No option - leave position blank Hand wind								HW